

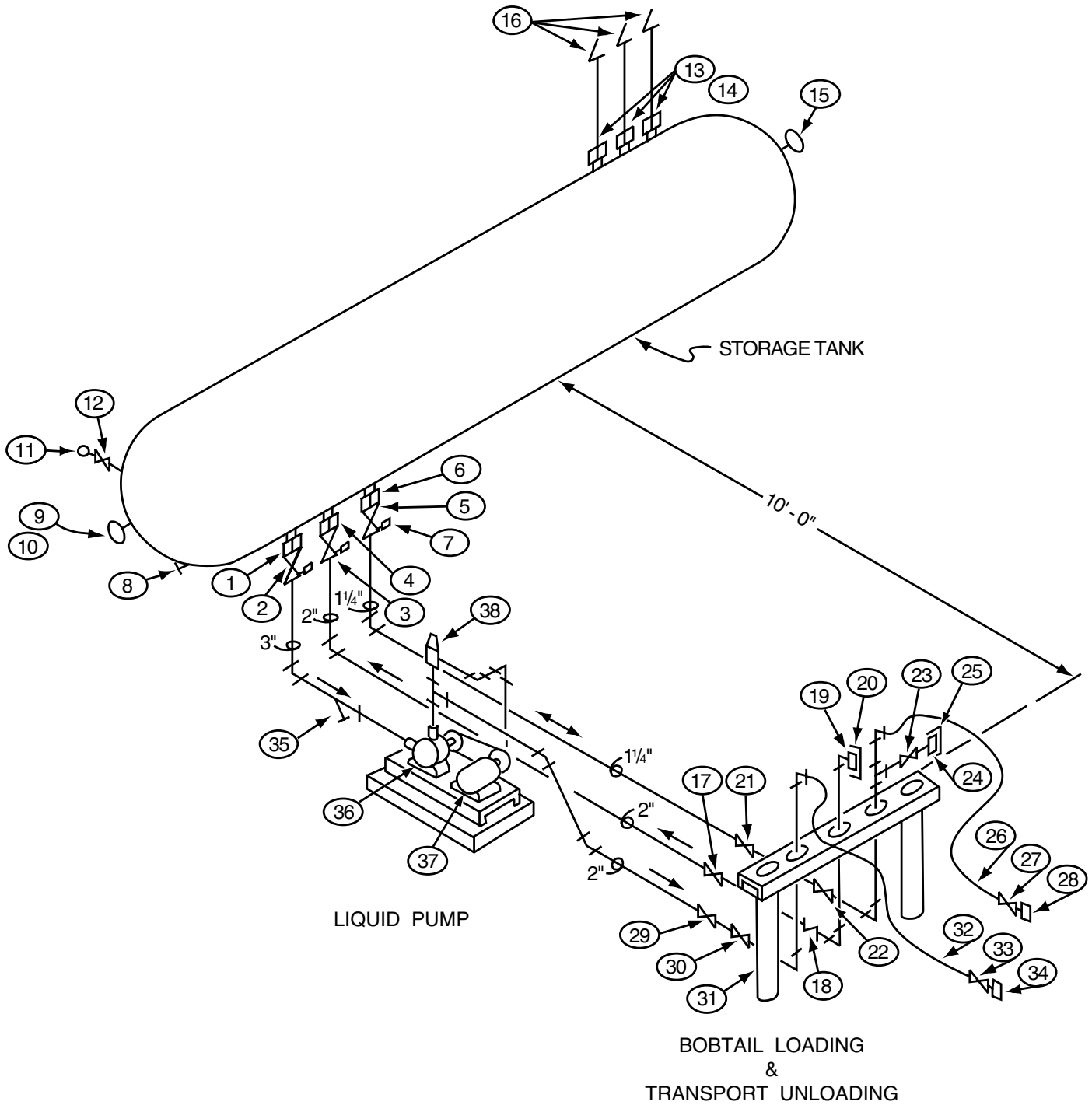
**IMPORTANT INFORMATION:** Product must be installed and used in strict conformance with NFPA Pamphlet 58 and/or NFPA Pamphlet 54 and all other codes, regulations and manufacturer recommendations.

Failure to follow these codes, regulations and recommendations could result in hazardous installation, bodily injury and/or death.

**PRODUCT TRAINING SCHOOLS AVAILABLE.** Contact a GEC customer service representative for more information.

**WARNING:** LP Gas is extremely flammable and explosive. Devices used for handling LP Gas and Anhydrous Ammonia must be installed and used in strict conformance with NFPA Pamphlet 58 and 54 and all other codes, regulations and manufacturer recommendations.

## Single Stanchion



**Note:**

The 2001 edition of NFPA58 requires new container installations (4,000 W.G. or greater) to have Internal Valves for both liquid and vapor service. In addition, all existing internal valves will be required to have remote closures and thermal protection by July 1, 2003.

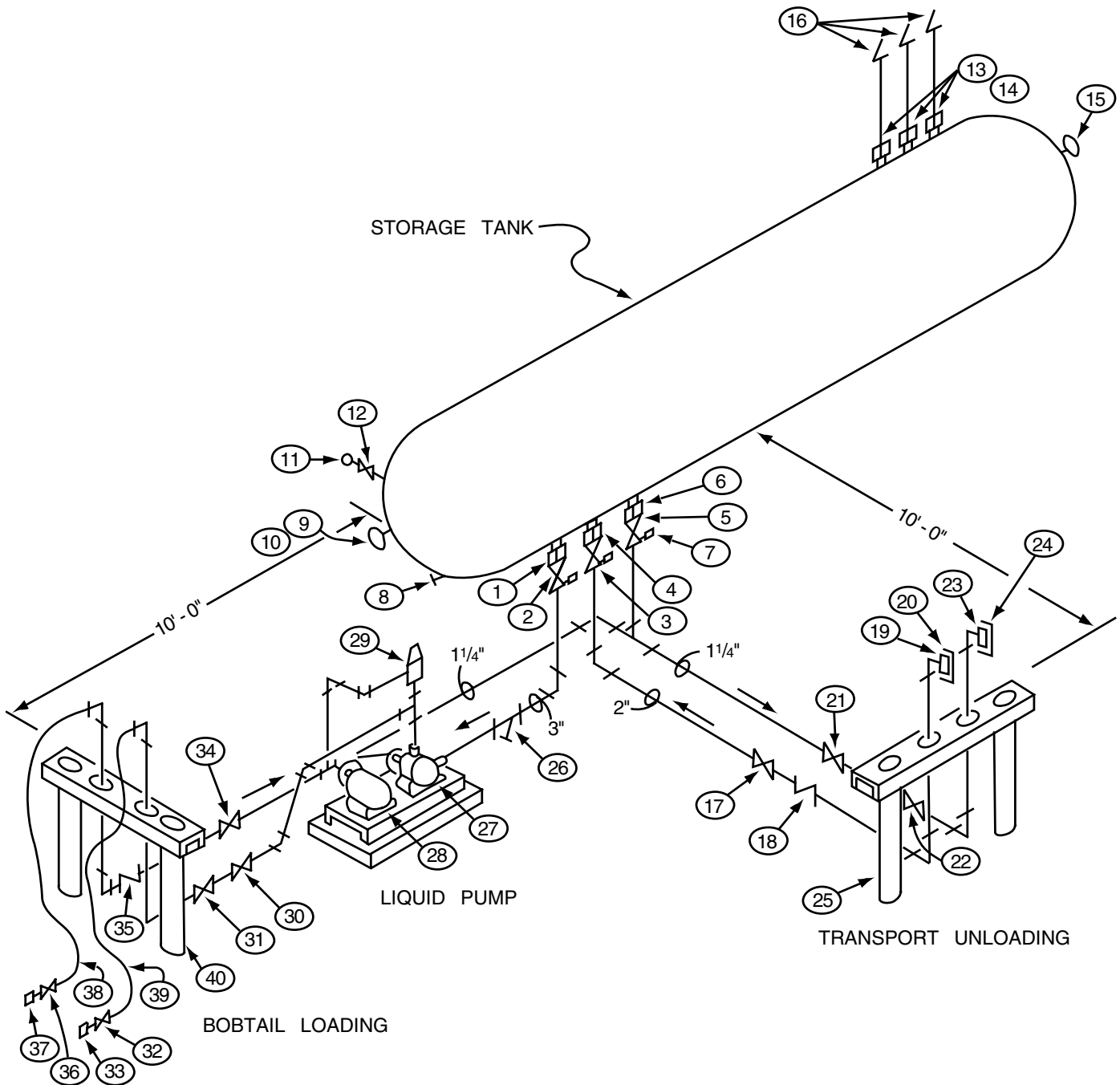
Existing containers without Internal Valves must be retrofitted by July 1, 2011.

Review NFPA58 as well as your state and local requirements.

## Single Stanchion

ITEM NO.	DESCRIPTION	QUANTITY
<b>TANK TRIM</b>		
1	A3213A Rego Internal Valve	1
2	A7517AP Rego 3" Globe Valve	1
3	A7513AP Rego 2" Globe Valve	1
4	A3212A Rego Internal Valve	1
5	A7509BP Rego 1 <sup>1</sup> / <sub>4</sub> " Globe Valve	1
6	A3209 Rego Internal Valve	1
7	3127U Rego Hyd. Relief Valve	3
8	1750-00115 Thermometer	1
9	C6342-11-108 Magnetel Gauge	1
10	22-29 Flange Mounting Adapter	1
11	J5563 0-300 Pressure Gauge	1
12	A2805C Rego Combo Valve	1
13	7534G Rego Relief Valves	3
14	7534-20 Rego Adapter Pipeaway	3
15	A9095RS, A9091-18LX, A9091M Rotogage	1
16	RVS-3 Relief Vent Stacks w/Weather Caps	3
<b>BOBTAIL LOADING &amp; TRANSPORT UPLOADING</b>		
17	A7513AP Rego 2" Globe Valve	1
18	A3186 Rego 2" Back Check Valve	1
19	5769H Rego 3 <sup>1</sup> / <sub>4</sub> " ACME x 2" Adapter	1
20	A3194-90 Rego Cap & Chain	1
21	A7509BP Rego 1 <sup>1</sup> / <sub>4</sub> " Globe Valve	1
22	A7781AF Rego 1 <sup>1</sup> / <sub>4</sub> " ESV	1
23	A7509BP Rego 1 <sup>1</sup> / <sub>4</sub> " Globe Valve	1
24	5765F Rego 1 <sup>3</sup> / <sub>4</sub> " x 1 <sup>1</sup> / <sub>4</sub> " Adapter	1
25	3175P Rego Cap & Chain	1
26	L20LP2x15FT Lifeline 1 <sup>1</sup> / <sub>4</sub> " Hose w/Couplings	15 ft
27	A7509BP Rego 1 <sup>1</sup> / <sub>4</sub> " Globe Valve	1
28	3175A Rego Hose Coupling	1
29	A7513AP Rego 2" Globe Valve	1
30	6016 Rego 2" ESV	1
31	Steel Stanchion 2" x 2" x 1 <sup>1</sup> / <sub>4</sub> "	1
32	L3-32LP3x15FT-F Lifeline 2" Hose w/Coupling	15 ft
33	A7513AP Rego 2" Globe Valve	1
34	A3195 Hose Coupling	1
<b>LIQUID PUMP</b>		
35	STYLEC-DI-300 3" Strainer	1
36	3" Pump Unit	1
37	10 HP Motor	1
38	BV-200 Pump Bypass Valve	1

## Double Stanchion



**Note:**

The 2001 or 2004 edition of NFPA58 requires new container installations (4,000 W.G. or greater) to have Internal Valves for both liquid and vapor service. In addition, all existing internal valves will be required to have remote closures and thermal protection by July 1, 2003.

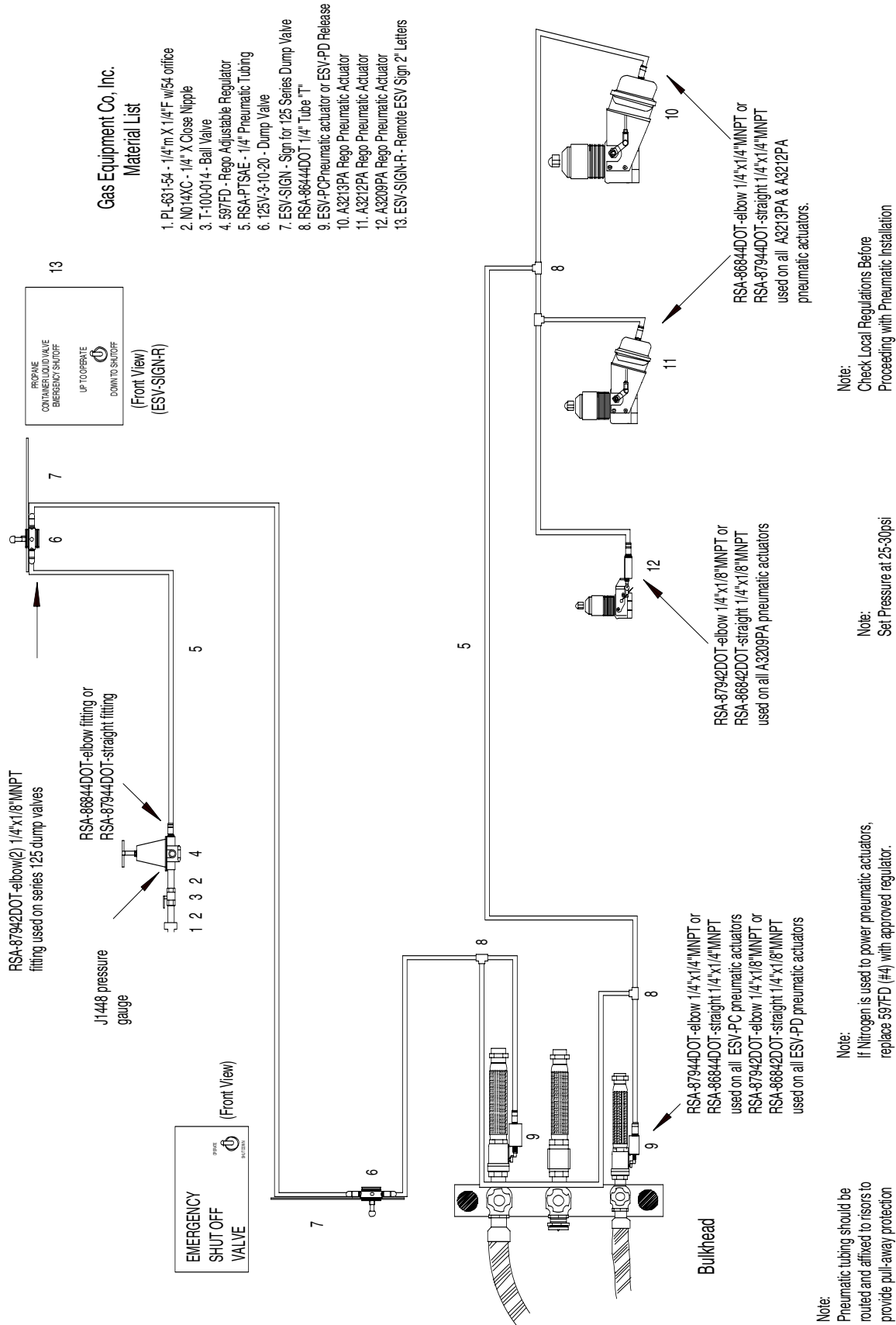
Existing containers without Internal Valves must be retrofitted by July 1, 2011.

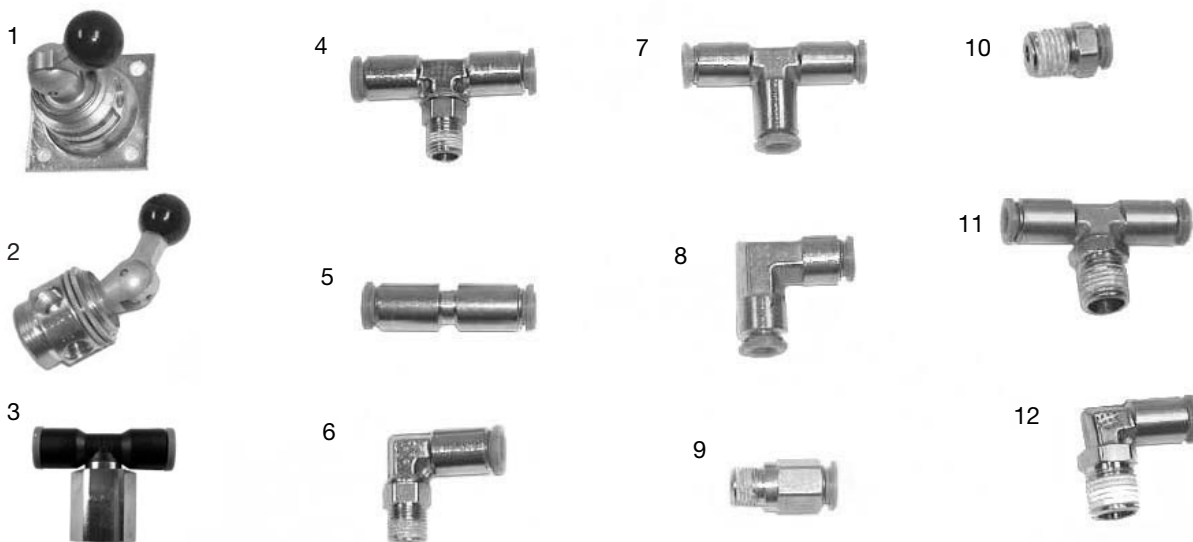
Review NFPA58 as well as your state and local requirements.

## Double Stanchion

ITEM NO.	DESCRIPTION	QUANTITY
<b>TANK TRIM</b>		
1	A3213A Rego Internal Valve	1
2	A7517AP Rego 3" Globe Valve	1
3	A7513AP Rego 2" Globe Valve	1
4	A3212A Rego Internal Valve	1
5	A7509BP Rego 1 1/4" Globe Valve	1
6	A3209 Rego Internal Valve	1
7	3127U Rego Hyd. Relief Valve	3
8	1750-00115 Thermometer	1
9	C6342-11-108 Magnetel Gauge	1
10	22-29 Flange Mounting Adapter	1
11	J5563 0-300 Pressure Gauge	1
12	A2805C Rego Combo Valve	1
13	7534G Rego Relief Valves	3
14	7534-20 Rego Adapter Pipeaway	3
15	A9095RS, A9091-18LX, A9091M Rotogage	1
16	11011 3" Weather Cap	3
<b>TRANSPORT UPLOADING</b>		
17	A7513AP Rego 2" Globe Valve	1
18	A3186 Rego 2" Back Check Valve	1
19	5769H Rego 3 1/4" ACME x 2" Adapter	1
20	3194-90 Rego Brass Cap	1
21	A7509BP Rego 1 1/4" Globe Valve	1
22	A7781AF Rego 1 1/4" ESV	1
23	5765F Rego 1 3/4" x 1 1/4" Adapter	1
24	3174-93 Rego Cap & Chain	1
25	BH-10CV2-2CPLG <small>2 Port Vertical Bulk Head w/2" 3M Full Couplings</small>	1
<b>LIQUID PUMP</b>		
26	STYLEC-DI-300 3" Strainer	1
27	3" Pump	1
28	10 HP Motor	1
29	BV-200 Pump Bypass Valve	1
<b>BOBTAIL LOADING</b>		
30	A7513AP Rego 2" Globe Valve	1
31	6016 Rego 2" ESV	1
32	A7513AP Rego 2" Globe Valve	1
33	3195 Hose Coupling	1
34	A7509BP Rego 1 1/4" Globe Valve	1
35	A7781AF Rego 1 1/4" ESV	1
36	A7509BP Rego 1 1/4" Globe Valve	1
37	3174-93 Rego Cap & Chain	1
38	E20LP2x15FT 1 1/4" Hose w/Couplings	15 ft
39	L3-32LP3x15FT-F 2" Hose w/Coupling	15 ft
40	BH-10CV2-2CPLG <small>2 Port Vertical Bulk Head w/2" 3M Full Couplings</small>	1

## Bult Plant Pneumatic Layout





Part Id	Part No	Description
1	125V-3-10-21	Discharge Valve with Base
2	125V-3-10-20	Pneumatic Toggle Valve, 3-way, with Locknut
3	RSA-57444DOT	1/4" Tube x 1/4" Tube x 1/4" Female NPT Tee
4	RSA-87242DOT	1/4" Tube x 1/4" Tube x 1/8" NPT Tee
5	RSA-86244DOT	1/4" Tube Union
6	RSA-87942DOT	1/4" Tube x 1/8" NPT Elbow
7	RSA-86444DOT	1/4" Tubing Tee
8	RSA-86544DOT	1/4" x 1/4" Tube Elbow
9	RSA-86842DOT	1/4" Tube x 1/8" NPT Straight
10	RSA-86844DOT	1/4" Tube x 1/4" NPT Straight
11	RSA-87244DOT	1/4" Tube x 1/4" Tube x 1/4" NPT Tee
12	RSA-87944DOT	1/4" Tube x 1/4" NPT Elbow
13	ESV-SIGN	Aluminum "Emergency Shutoff Valve" Sign 5-1/2" x 9-1/2" Red on White (valve not included)
14	ESV-SIGN-R	Metal "Emergency Shutoff Valve" Sign 29" x 15-1/2" Red on White (valve not included)
15	RSA-PTSAE	1/4" Pnuematic Tube 100 ft Roll
16	RVS-3	3" Relief Valve Stack w/Weather Cap
17	RVS-4	4" Relief Valve Stack w/Weather Cap

12



13



14



15



For protection of piping systems against truck pull-away with hose still connected. These bulkheads are made of 10" channel with schedule 40 tube acting as sleeves for your piping to run through. When anchored in a concrete block (approximately 4 ft. x 4 ft. x 4 ft.) the bulkhead becomes a sound wall of protection against most pull-aways.

Part #	Description
BH-10CV2	Bulkhead - 2 Port
BH-10CV2-PKG	Bulkhead Piping Package (Piping only for Sleeve Type Bulkhead - from Elbow to Elbow)

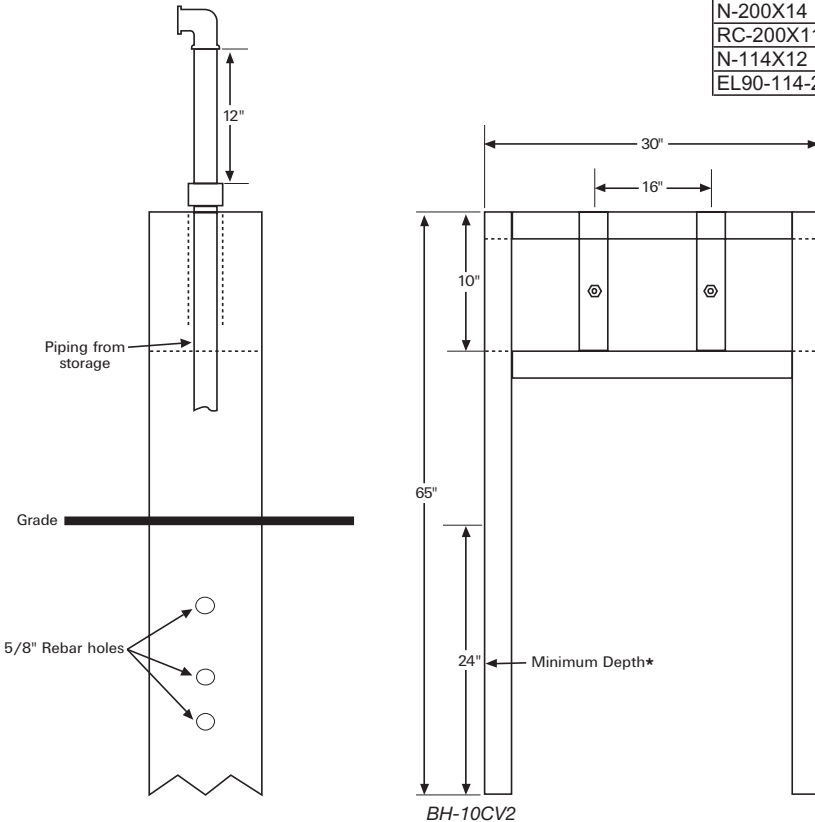
Specify pipe size you will be using.  
Approved by the Railroad Commission of Texas.  
3 Port Bulkhead available upon special order.

#### LIQUID SIDE

Part #	Description	QTY
EL90-200-2M	2" Elbow 2000#	2
N-200X14	2" X 14" Schedule 80 Nipple	1
FC-200-3M	2" Full Coupling 3000#	1
N-200X12	2" X 12" Schedule 80 Nipple	1

#### VAPOR SIDE

Part #	Description	QTY
REL90-200X114	2" x 1-1/4" Reducing Elbow 2000#	1
N-200X14	2" X 14" Schedule 80 Nipple	1
RC-200X114-3M	2" X 1-1/4" Reducing Coupling 3000#	1
N-114X12	1-1/4" X 12" Schedule 80 Nipple	1
EL90-114-2M	1-1/4" Elbow 2000#	1



BH-10CV2-PKG  
Piping Kit only.  
Bulkhead not included.

\*Check with local codes for proper above grade height.  
Bulkheads shall be anchored in reinforced concrete to prevent displacement of the bulkhead.  
Reinforcement rod not supplied.

## Stanchions with Welded Couplings

Safety Stanchions are designed for safe transfer of propane at the bobtail loading and transport unloading points in a bulk plant. The stanchion is Rigid All-Steel construction.

Part #	Description
BH-10CV2-2CPLG	2-Port Vertical Bulk Head w/2" 3M Full Couplings
BH-10CV2-3CPLG	2-Port Vertical Bulk Head w/3" 3M Full Couplings
BH-10CV3-2CPLG	3-Port Vertical Bulk Head w/2" 3M Full Couplings
BH-10CV3-3CPLG	3-Port Vertical Bulk Head w/3" 3M Full Couplings



## Red Dragon Manual Propane Flare

The RED DRAGON Manual Propane Flare allows you to evacuate bulk tanks, bobtails and other tanks any where quickly, safely and without venting raw propane into the atmosphere. This compact, durable unit is quick to set up, very simple to use and requires no electricity making it perfect for emergency crews, haz mat teams and fire departments who need to act fast and in remote locations. Keep one on hand in case emergency flare-off is necessary. Also great for propane distributors and dealers flaring off tanks so that valves and gauges may be changed out, saving you time and money. Comes with everything necessary except the vapor cylinder for pilot torch operation.

Part #	Description	Wt. Each	Std. Qty.
PFM-16 LPS	1/2" Manual Flare	96 lbs.	1

### FEATURES OF ALL MANUAL FLARES

- Flares liquid or vapor propane
- Telescoping flare tower sets up fast & stands 9' above the ground keeping the flame at a safe distance
- Convenient valve box & simple design featuring quick connectors & flared fittings make set up quick & easy
- 25' U.L. listed evacuation hose with bulk adaptor
- 10' U.L. listed pilot hose & regulator
- Stable triangular base & ground stakes for set up on any terrain
- Quick, easy setup & operation



### FLARE SPECIFICATIONS:

#### 1/2" Flare

48,300,000 BTU/hr Max

Flares up to 529 gal/hr



*All components fit neatly into a durable carry bag. The valve box features quick connections and flared fittings making set up fast & easy.*



*Pilot Cylinder  
Not Included*

