

First Stage Regulators

Spring Loaded - Low & High Pressure

The PG627 is a Spring Loaded Low & High Pressure Regulator used for first stage applications. Construction materials are a Cast Ductile Iron Body with an Aluminum Bonnet & Diaphragm Case. The exterior powder-coated epoxy finish provides durability and installation versatility.

| Model # | Port Size | Max. Inlet Pressure | Max. Outlet Pressure | Capacity |
|---------|-----------|---------------------|----------------------|------------------|
| PG627 | 1" | 250 PSI | 5 PSI to 20 PSI | Up to 45.5 MBTUH |
| | 2" | | 15 PSI to 40 PSI | |

Direct Acting Features:

- Balanced valve design.
- Built-in Pulsation Damper.
- Available with High and/or Low Pressure Shut-Off Valve (PGD11 Only).
- Requires Down-Stream Sensing Line.

| Model # | Port Size | Max. Inlet Pressure | Max. Outlet Pressure | Capacity |
|----------|------------|---------------------|----------------------|-----------------|
| PGD1&2 | 1 1/2" | 275 PSI | 11" WC to 30 PSI | 15 to 200 MBTUH |
| PGD11&12 | 2" Flanged | | | |

Pilot Operated Features:

- Accurate downstream pressure control despite varying flows and inlet pressure.
- Spring loaded pilot internal relief valve assembly.
- No downstream sensing line required since it has an internal bleed hole.

| Model # | Port Size | Max. Inlet Pressure | Max. Outlet Pressure | Capacity |
|---------|-----------|---------------------|----------------------|----------------|
| PGP12 | 2" | 250 PSI | 30 PSI | 15 to 69 MBTUH |

Second Stage Regulators

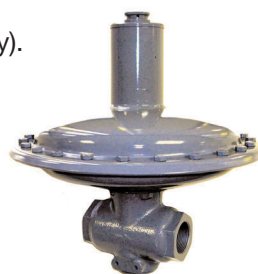
Spring Loaded Features:

- Internal Relief Valve Assembly.
- Field Interchangeable Adjustment Spring.
- Controlled Size Breather Orifice eliminates pulsation.

| Model # | Port Size | Max. Inlet Pressure | Max. Outlet Pressure | Capacity |
|---------|--------------|---------------------|----------------------|----------------|
| PGS10 | 1 1/2" or 2" | 125 PSI | 11" WC to 5 PSI | Up to 31 MBTUH |
| PGS12 | | | | |
| PGS24 | | | | |



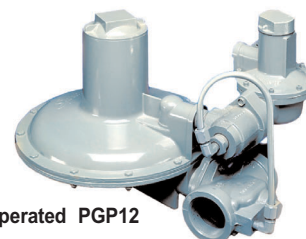
Spring Loaded PG627



Direct Acting PGD1



Direct Acting PGD22



Pilot Operated PGP12



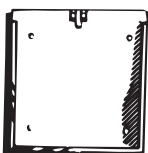
Spring Loaded PGS12

Commercial and Industrial Gas Systems are to be installed according to Federal, State, and Local Codes.

Please verify system requirements with an authority having jurisdiction.



| Part # | Description | Size | Color |
|--------|--|---------|-------------------------|
| G-1075 | Magnetic - For LP Gas | 10 7/8" | Red on white background |
| V-1075 | Vinyl - For LP Gas | | |
| P-1075 | Plastic - For LP Gas to be used with MPH-69 Placard Holder | 10 5/8" | |



| Part # | Description | Size | Color |
|--------|------------------------------------|------|-------|
| MPH-69 | Aluminum - placard mounting holder | 11" | White |



| Part # | Description | Size | Color |
|--------|---|---------|--------------|
| V-52 | Vinyl - Diamond Decal - "Flammable gas" | 10 1/2" | Red on White |



| Part # | Description | Size | Color |
|--------|---------------------------|-----------|----------------------|
| RSP | Flip Placard - For LP Gas | 14" x 14" | Red & Black On White |



| Part # | Description | Size | Color |
|--------|---|-------------|---------------|
| AA-16 | Portable cylinder label - min. order 500 pieces | 1 1/2" x 5" | black imprint |



| Part # | Description | Size | Color |
|--------|---------------------------------|-----------|------------------------|
| CS-33 | DOT Cylinder Label, Curved Only | 1.5" x 5" | Red and black on white |



| Part # | Description | Size | Color |
|----------------|--|-------------|----------------|
| S500-9-90 | Reflective Propane Label - for motor fuel | 3" x 4 1/2" | White on Black |
| S500-9-90-BLUE | Reflective Propane Label - Texas Only - for motor fuel | | White on Blue |



| Part # | Description | Size | Color |
|--------|---------------------------|---------|---------------------------|
| V-1005 | Vinyl - Anhydrous Ammonia | 10 7/8" | Green on white background |



| Part # | Description | Size | Color |
|------------|--|-----------------|-------|
| NFPA-704-1 | Hazard decal - Storage tank diamond for Propane 100 ft. legibility | 7 1/2" x 7 1/2" | - |
| NFPA-704-3 | Hazard decal - Storage tank diamond for Propane 300 ft. legibility | 15" x 15" | - |

GAS LINE

| Part # | Description | Size | Color |
|--------|----------------------|-----------|-----------------|
| VGS100 | Sticker - "GAS LINE" | 1/2" x 1" | Black On Yellow |



| Part # | Description | Size | Color |
|--------|--|---------------|--------------|
| V-45 | Vinyl - 10" x 10" label sheet for bulk trucks/transport (openings & ESV valves) designed to meet D.O.T. & NFPA standards | 1" x 3" label | Red on white |

VAPOR
VAPOR
VAPOR
VAPOR
VAPOR

LIQUID
LIQUID
LIQUID
LIQUID
LIQUID

| Part # | Description | Size | Color |
|--------|-----------------------------------|---------------|--------------|
| V-90-5 | Vinyl - Liquid label (Sheet of 5) | 1" x 4" label | Red on white |
| V-91-5 | Vinyl - Vapor label (Sheet of 5) | | |

WE STOP AT ALL RR CROSSINGS

| Part # | Description | Size | Color |
|--------|-------------------------|----------|---------------------------------|
| S-22B | Reflective - Scotchlite | 4" x 36" | Red letters on white background |

LIQUEFIED PETROLEUM GAS

| Part # | Description | Size | Color |
|----------|----------------------------------|------------|---------------------------------|
| V-302-BB | Vinyl- "Liquefied Petroleum Gas" | 3" letters | Red letters on white background |

ANHYDROUS AMMONIA

INHALATION HAZARD

| Part # | Description | Size | Color |
|--------|-----------------------------|------------|-----------------------------------|
| V-2A | Vinyl - "Anhydrous Ammonia" | 3" x 24" | Green letters on white background |
| V-2B | Vinyl - "Inhalation Hazard" | 2" letters | |

PROPANE

| Part # | Description | Size | Color |
|--------|-------------------|------------|---------------------------------|
| V-28A | Vinyl - "Propane" | 6" letters | Red letters on white background |
| V-28BB | | 3" letters | |
| V-28C | | 2" letters | |

FLAMMABLE GAS

| Part # | Description | Size | Color |
|--------|-------------------------|------------|---------------------------------|
| V-17C | Vinyl - "Flammable Gas" | 2" letters | Red letters on white background |

FLAMMABLE

| Part # | Description | Size | Color |
|--------|--------------------|------------|---------------------------------|
| V-24A | Vinyl- "Flammable" | 6" letters | Red letters on white background |
| V-24B | | 4" letters | |

NO SMOKING

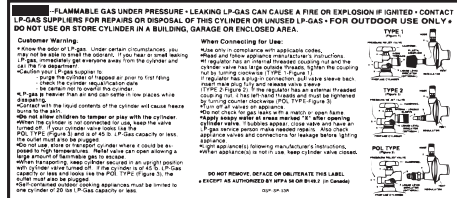
| Part # | Description | Size | Color |
|--------|-------------------------|------------|---------------------------------|
| V-23A | Vinyl - "No Smoking" | 6" letters | Red letters on white background |
| V-23B | | 4" letters | |
| V-23C | | 2" letters | |
| M-23B | Aluminum - "No Smoking" | 4" letters | |

NO SMOKING OR OPEN FLAMES WITHIN 50 FEET

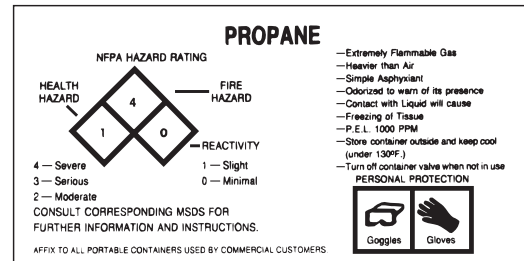
| Part # | Description | Size | Color |
|--------|--|-----------|--------------|
| V-26B | Vinyl - "No Smoking Or Open Flames Within 50 Feet" | 12" x 18" | Red on white |



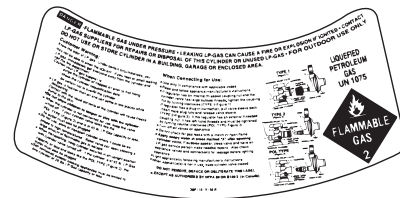
| Part # | Description | Size | Color |
|----------|---------------------------------|---------|-------|
| V-83 | Shipping paper - Bulk truck | 5" x 7" | - |
| V-83-CYL | Shipping paper - Cylinder truck | | |



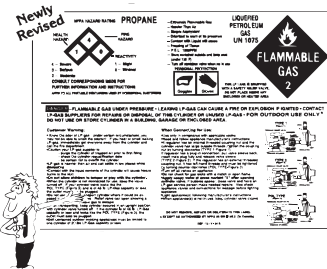
| Part # | Description | Size | Color |
|--------|------------------------|---------|-----------------|
| SP-53R | Vinyl - Cylinder decal | 4" x 9" | Black on yellow |



| Part # | Description | Size | Color |
|--------|-------------------------------------|-------------|---------------------------|
| HZ-116 | Vinyl - Cylinder decal- NFPA hazard | 2 1/2" x 5" | Blue, yellow, red & black |



| Part # | Description | Size | Color |
|--------|---|-----------------|----------------------|
| V-55R | Vinyl - die-cut cylinder label. 2-in-1 combination <ul style="list-style-type: none"> • D.O.T. 1075/Warning • ANSI/NFPA Pamphlet 58 | 3 3/8" x 7 3/8" | Red & black on white |



| Part # | Description | Size | Color |
|--------|---|-----------------|---------------------------|
| V-44 | Vinyl - Cylinder label, 3-in-1 <ul style="list-style-type: none"> • D.O.T. 1075 • NFPA hazard rating • Warning ANSI/NFPA pamphlet 58 | 4 3/4" x 6 3/4" | Blue, yellow, red & black |



| Part # | Description | Size | Color |
|--------|--|------------|--------------|
| V-128 | Vinyl - "This container is NOT equipped with an OPD" | 3.75" x 4" | Red on white |

**PROPANE
CONTAINER LIQUID VALVE
EMERGENCY SHUTOFF**



| Part # | Description | Size | Color |
|------------|---|---------------|--------------|
| ESV-SIGN-R | Metal - "Emergency Shutoff" sign, fittings not included | 29" x 15 1/2" | Red on white |



| Part # | Description | Size | Color |
|--------|---------------------------------|---------------|---------------|
| V-92 | Multiple labels on yellow vinyl | 3/8" x 1 3/4" | Red on yellow |



| Part # | Description | Size | Color |
|----------|--|-----------------|--------------|
| ESV-SIGN | Aluminum - "Emergency Shutoff Valve" sign w/toggle, fittings not included. | 5 1/2" x 9 1/2" | Red on white |



| Part # | Description | Size | Color |
|--------|---|---------------|--------------|
| P-206 | Polyolefin - "DOT recommended filling procedures" | 14" x 21 1/2" | Red on White |



| Part # | Description | Size | Color |
|--------|--|-----------|--------------|
| V-81 | Vinyl - Emergency Shutoff Valve Pull to Close | 10" x 12" | Red on White |
| P-81 | Polyolefin - Emergency Shutoff Valve Pull to Close | | |



| Part # | Description | Size |
|--------|---------------------|-------------------------------|
| V-66 | Vinyl - "NQT" Decal | 2 3/4" x 4 1/2" 2" letters |

Does your valve look like this?

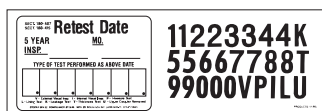
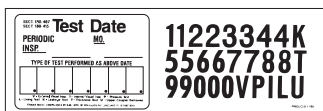
If not, it may not comply with national fire and safety standards. The handwheel pictured is part of an "OPD" (Overfilling Prevention Device). An OPD is a safety feature that helps reduce the number of cylinders overfilled. Overfilling of cylinders can result in the release of propane through the relief valve when the propane expands through heating. It can also create higher pressure delivery to appliances through the piping system.

Here's the facts you need to know!

- ◆ 48 - 40# new cylinders* manufactured after October 1, 1998 must have the OPD. The manufacture data is stamped on the cylinder collar.
- ◆ 48 - 40# cylinders* requisified after October 1, 1998 must have the OPD installed. Requalification is required 12 years after manufacture date and every 5 years thereafter.
- ◆ After April 1, 2002, all cylinders* must have OPDs and cannot be refilled without them.

*Exception: All cylinders used in industrial truck service (including forklift truck refueling) which those used for outdoor working and/or other uses are exempt from these requirements.

Be safe!
Call your propane dealer now to get your cylinder filled with the OPD.



| Part # | Description | Size | Color |
|---------|---|--------------|---------------------------------|
| 05-V-31 | Vinyl - Annual inspection kit (test date) | 6" x 15 1/2" | Red letters on white background |
| 05-V-32 | Vinyl - 5 year inspection kit (retest date) | | |

| Part # | Description | Size | Color |
|--------------------|---|-----------|----------------------|
| OPD Sign | Polyethelene - "OPD Customer Alert" sign | 16" x 20" | Red or blue on white |
| OPD Sign - Spanish | Polyethelene - "OPD Customer Alert" sign, Spanish version | 16" x 20" | Red or blue on white |